



## Printing Specs

---

**CD**

This tutorial is designed to help you avoid costly errors and production snags that could delay your projects completion, and it should help to ensure that your finished products are of the highest possible quality.  
The grafik files you send us should be ready for printing if they don't match with our below specs it will cause extra costs.

All Printings will be done as Offset printing.

- For any images that are going to be offset printed, we recommend that you use images of 350 dpi (300 minimum), at actual size.  
If you send .eps or .pdf files, all fonts should be embedded.

If you have chosen to print using custom Pantone colors (including metallics and fluorescents), then you must set up any custom color being used to print as a spot color.

Whenever an image is printed, folded and cut, there is some degree of inaccuracy in the cutting process. Even sophisticated machinery is not perfect, so sometimes one side of an image gets cut a little close or a little far. For this reason, printers require something called a bleed to ensure that the final printed product will still look good, regardless of whether a slight variation occurs during the printing process. Otherwise, if the cut line shifts to be outside the picture edge, there will be a thin white line on that edge of the final printed product. Please let 3-4 mm bleed to your files, its shown as a brown frame in our specs. This bleed should not contain any important part of your grafics (eg. text) only the background picture.

## ■ We except the following file types:

### recommended:

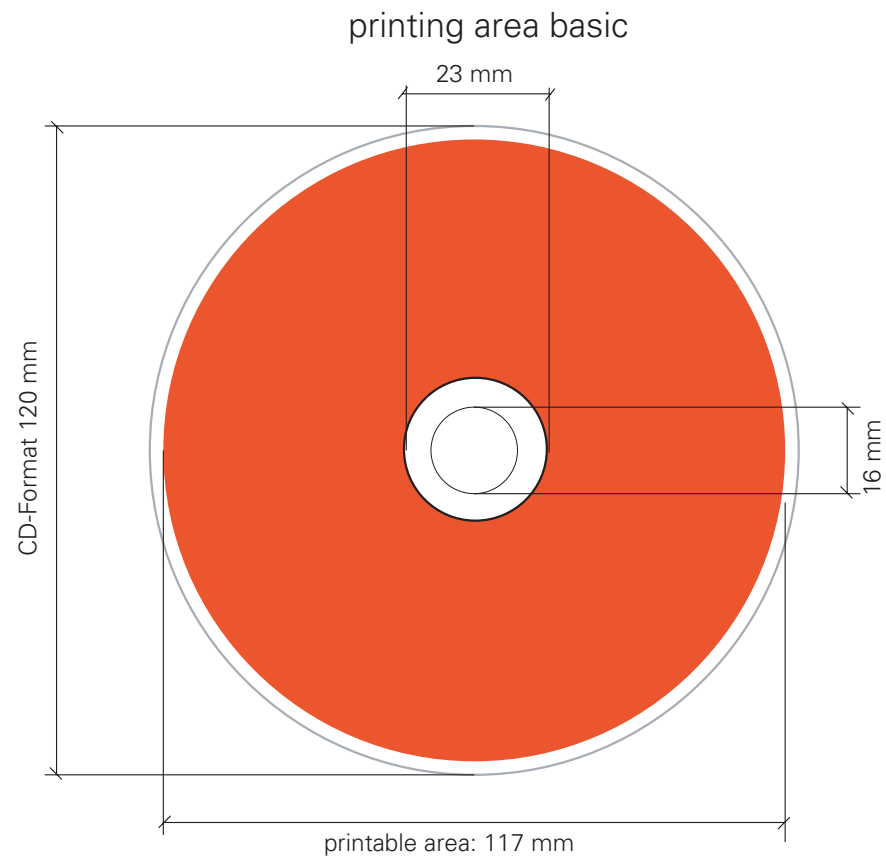
**pdf** fonts and linked files have to be embedded !  
**eps** fonts and linked files have to be embedded !

### possible:

**Photoshop** fonts have to be embedded !  
**Illustrator** fonts have to be embedded !  
**Tif** minimum 300 dpi resolution  
**jpeg** minimum 300 dpi resolution

# CD Labelprint Basic

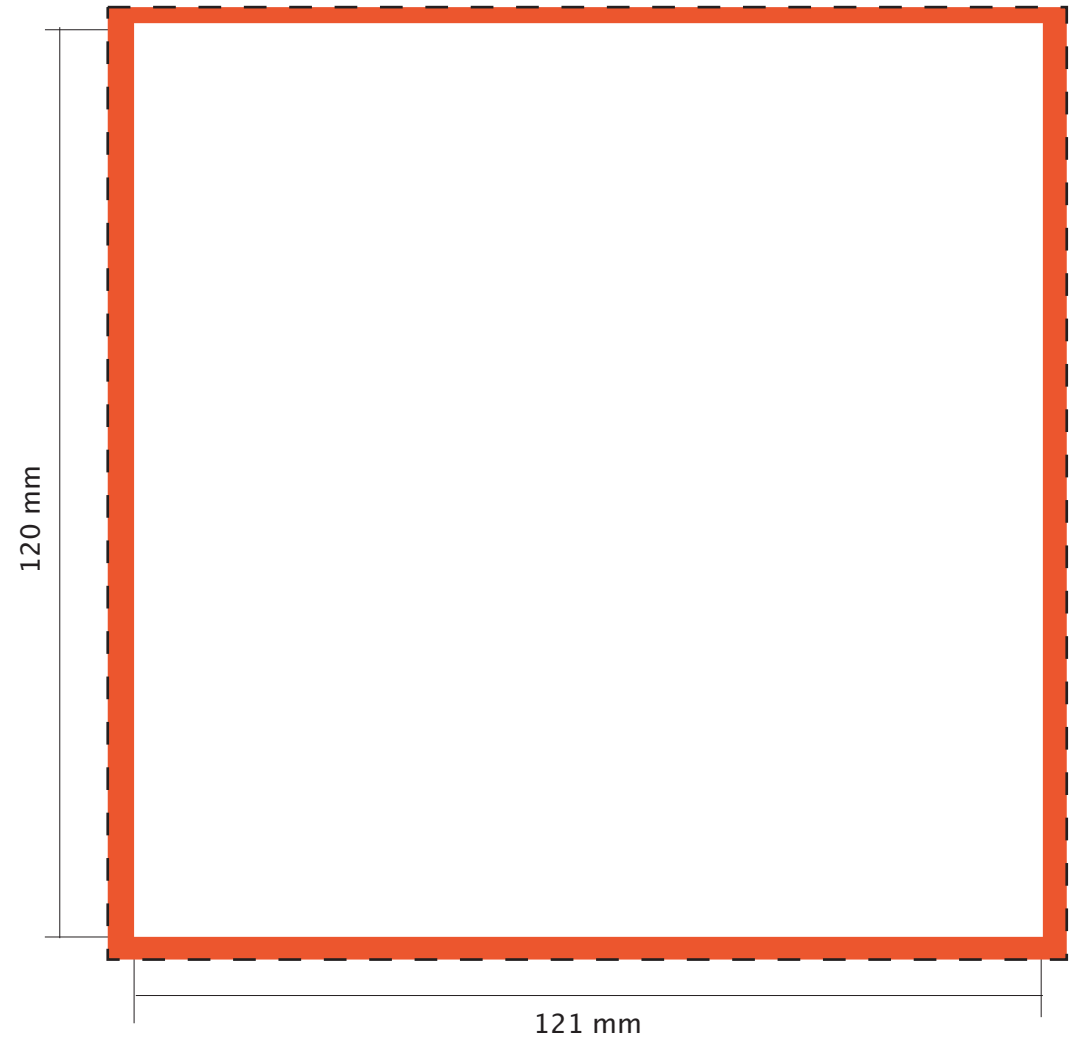
■ printing area  
without bleed



# Covercard

■ bleed

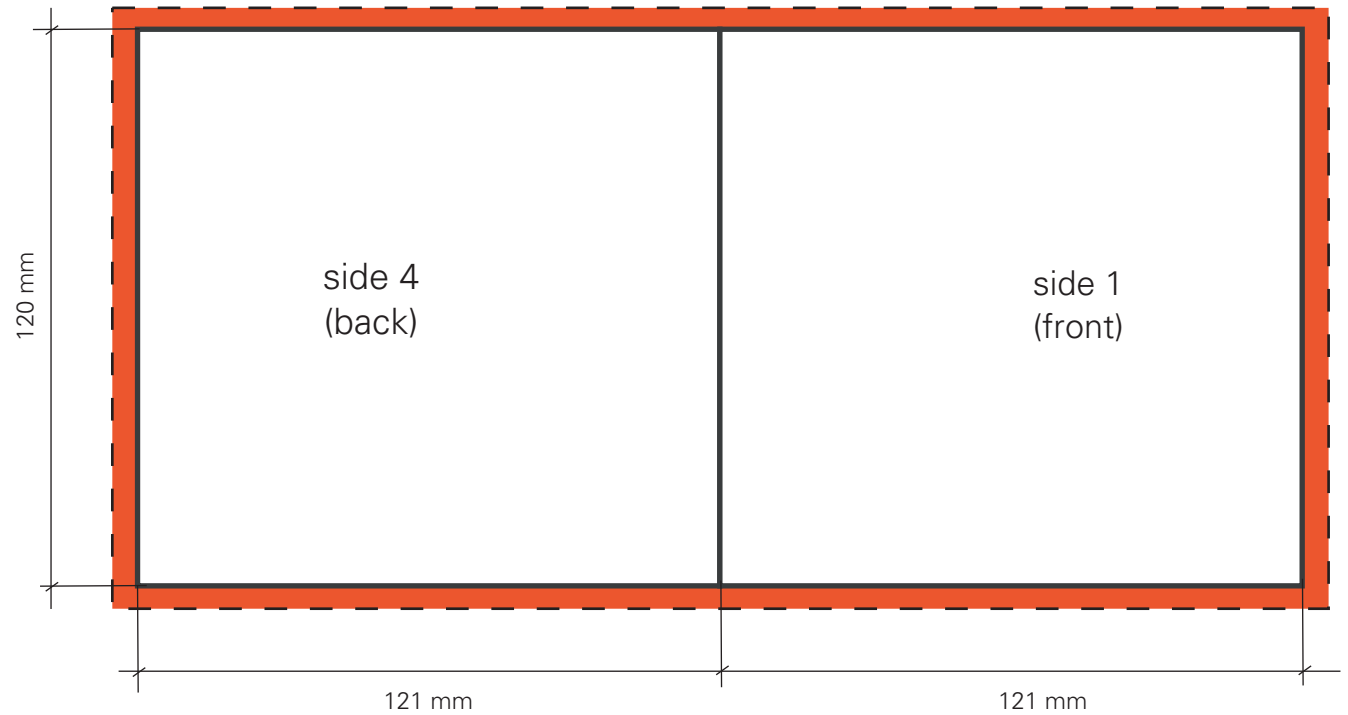
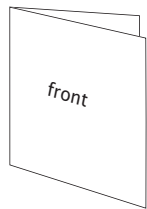
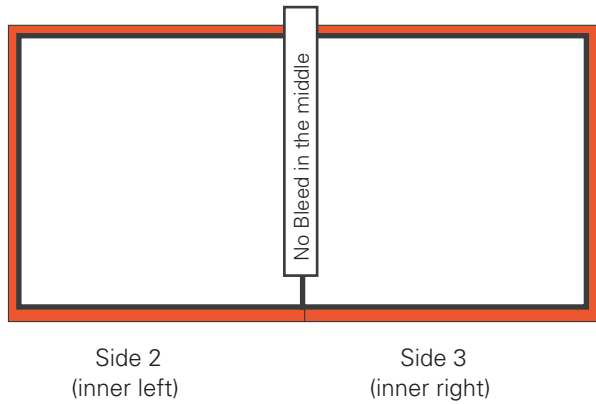
□ printing area



# Booklet / Covercard / 4 sided

■ bleed      ■ printing area

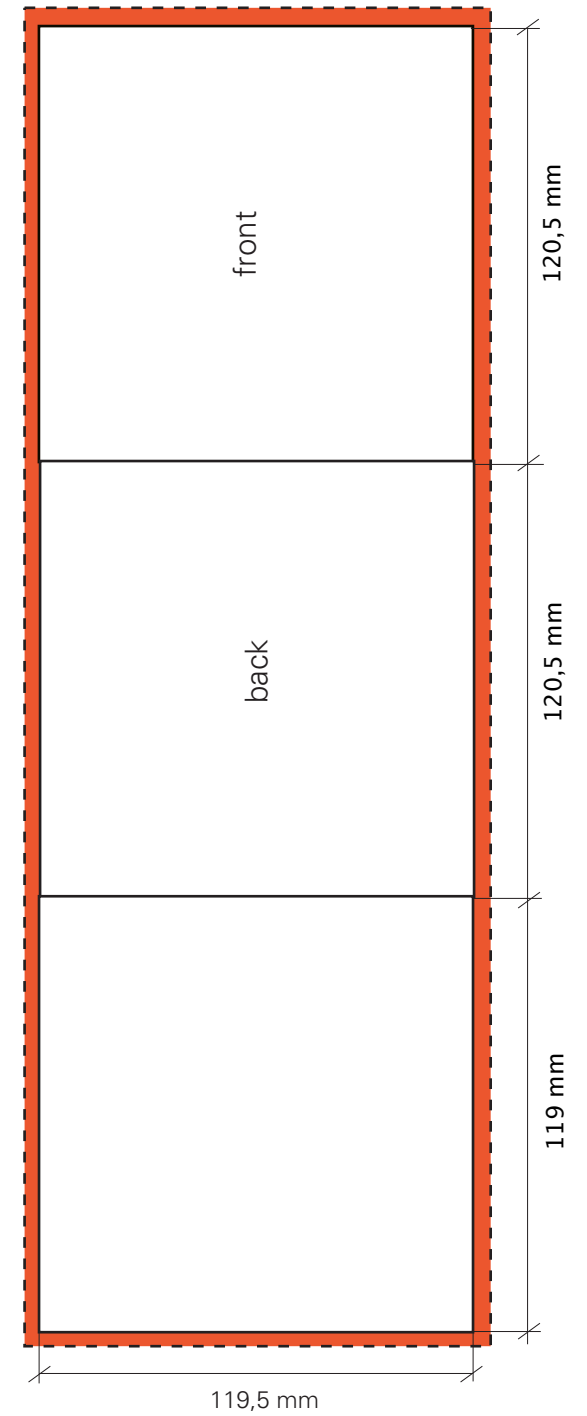
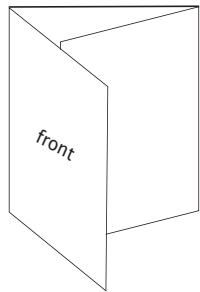
Please mount the corresponding pages of the booklet in one document.  
Start with side 8/1 if you want a 8 side booklet.  
Start with side 12/1 if you want a 12 side booklet.  
and so on ...



# Booklet 6 sided/ roll fold

■ bleed

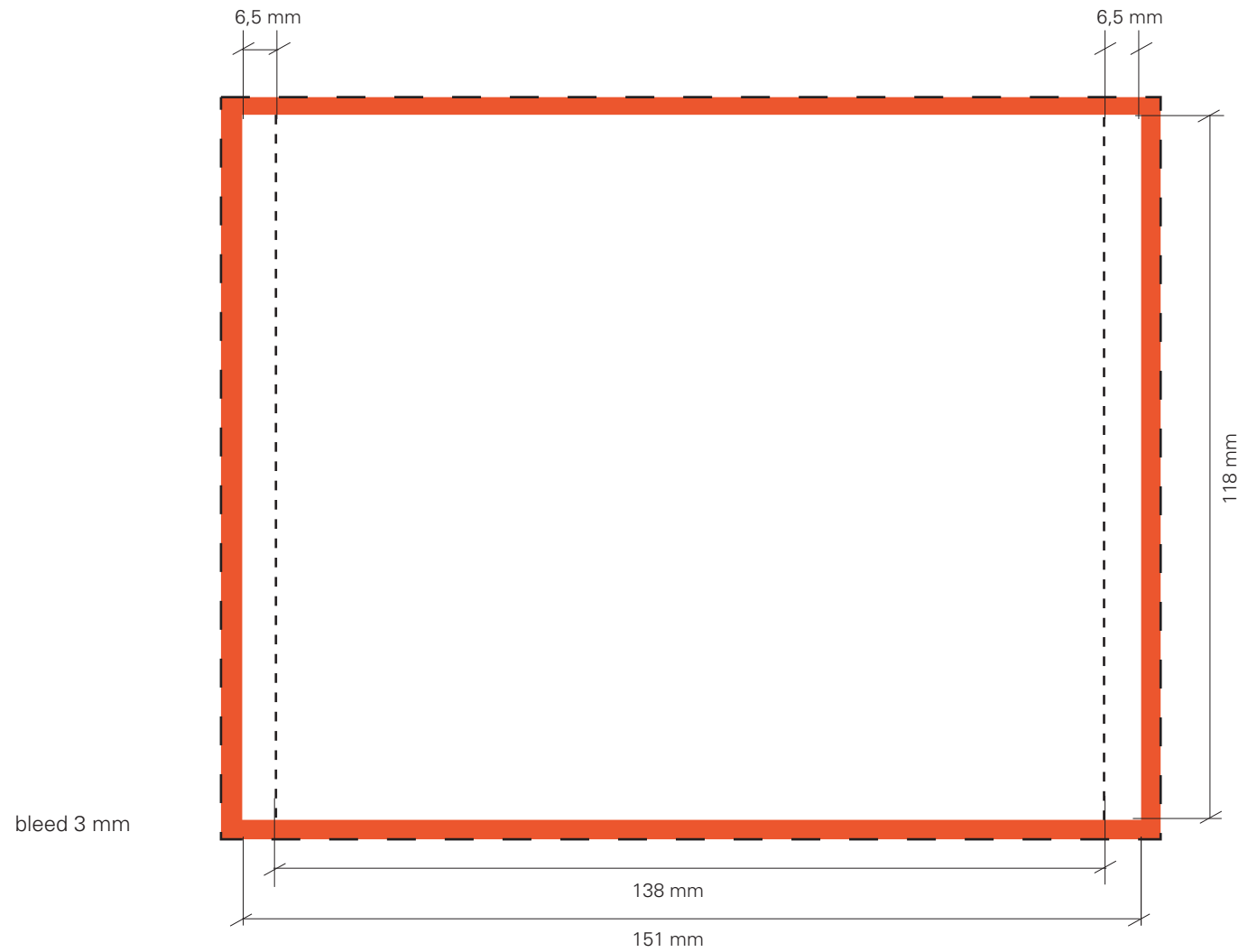
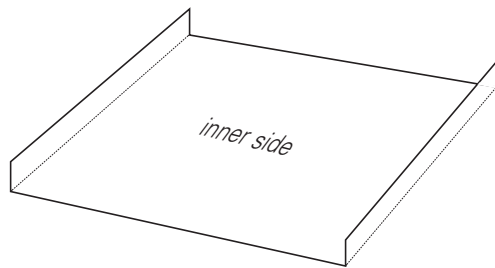
■ printing area



# Inlaycard

■ bleed

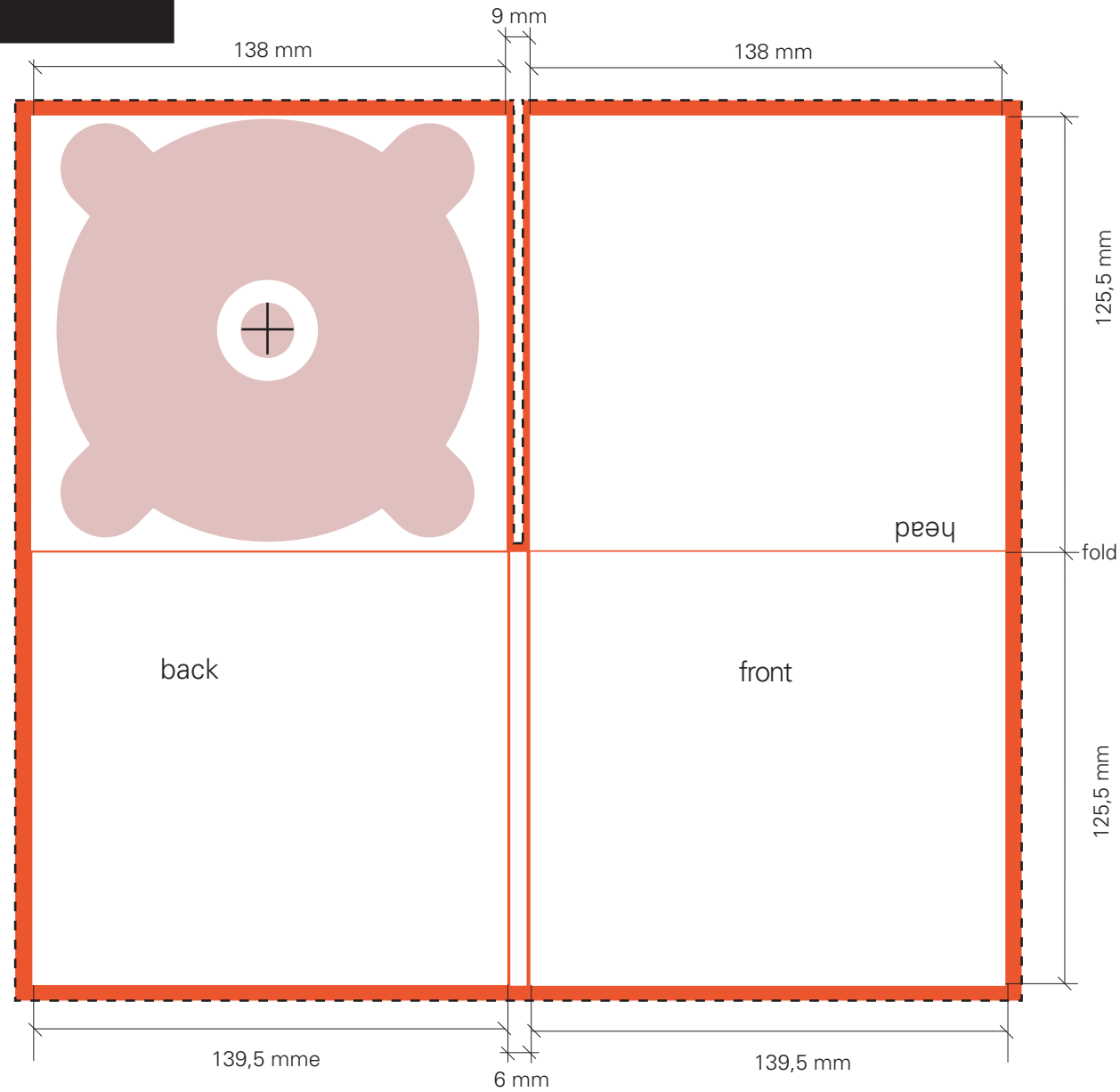
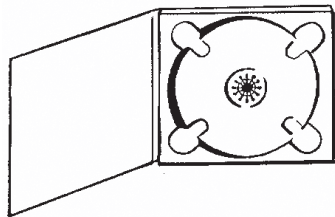
□ printing area



# Digipac 4 sided/ 1 Tray

■ bleed

■ printing area

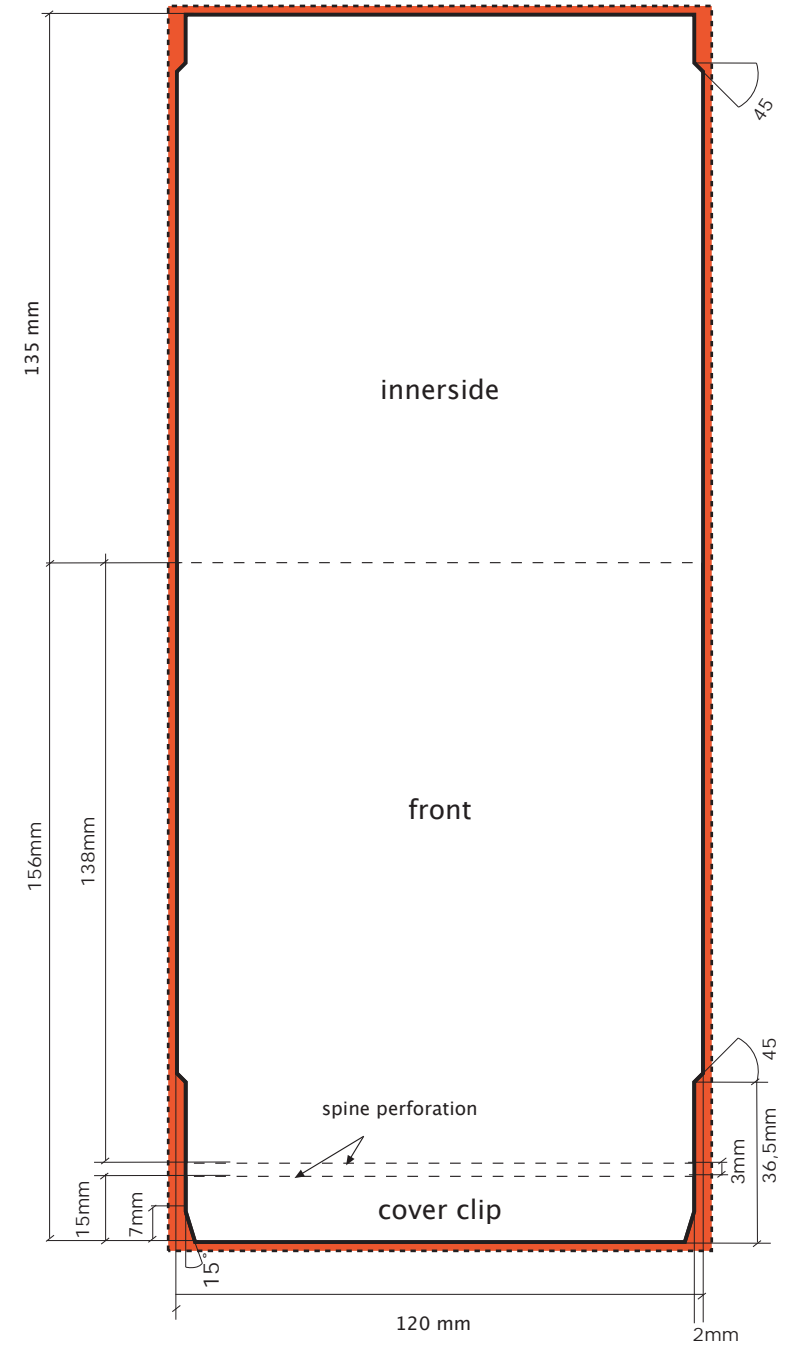
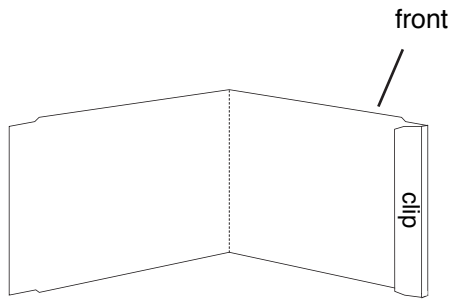




# Maxi-Card

■ bleed

□ printing area



# Carton pocket

■ bleed

□ printing area

